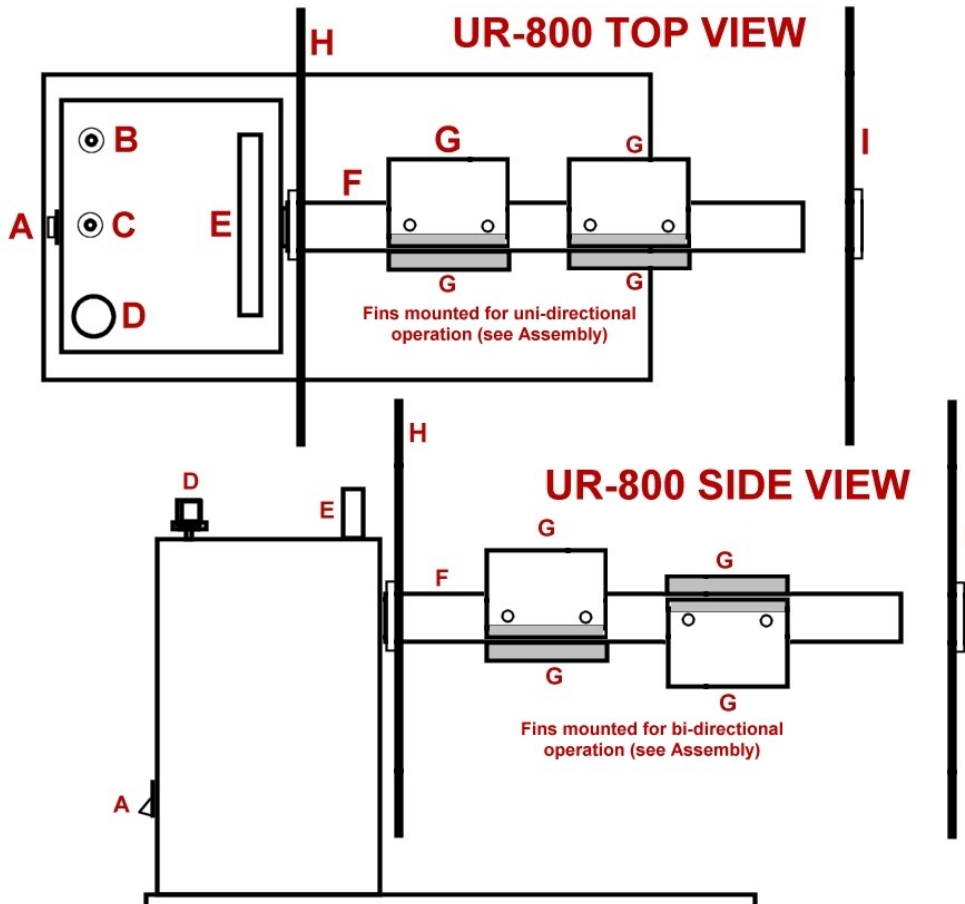




UR-800 - Universal Rewind Unit

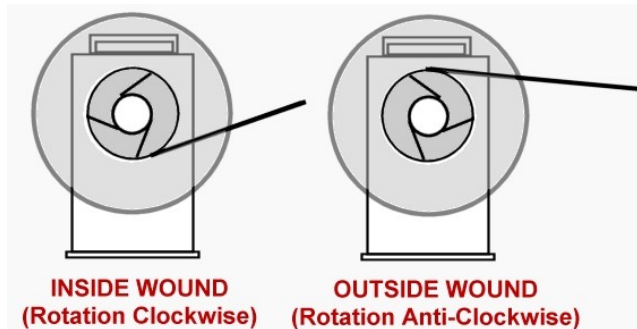
1. Controls and Operational Elements:



- A** Power (on/off) switch.
B Torque (resistance) switch.
Rewind – Normal operation, unit stops automatically when printer ceases feeding labels.
Slit – Continuous winding, unit does not stop (bursts label reel) when printer ceases feeding labels.
C Direction switch - Determines direction of rotation of the spigot:
<= (left) – Mandrel revolves clockwise.
0 (off) – Mandrel stops.
=> (right) – Mandrel revolves anti-clockwise.
NB: Mandrel rotation determines the wind pattern of the labels (inside/outside).
D Torque (speed) Control – Determines the speed of rotation of the mandrel, should be adjusted to the lowest speed that keeps pace with the feed from the printer (setting the speed too high may cause occasional bursting of the label roll).
E Carrying handle.
F Mandrel.
G Adjustable fins.
H/I Inner/Outer Guide Plates

2. Operation:

- a) To operate the unit, slide an empty cardboard core over the mandrel and fins.
NB: *For efficient operation, the 'fins' should be mounted appropriate to the intended direction of operation – see Assembly. **Never** attempt to wind labels onto the unit without a cardboard core.*
- b) Feed one or two labels from the printer, attach the end of the label reel to the cardboard core according to the intended direction of operation, attach using sellotape or by tearing away a portion of backing to reveal the adhesive underside of a label. *See Below.*

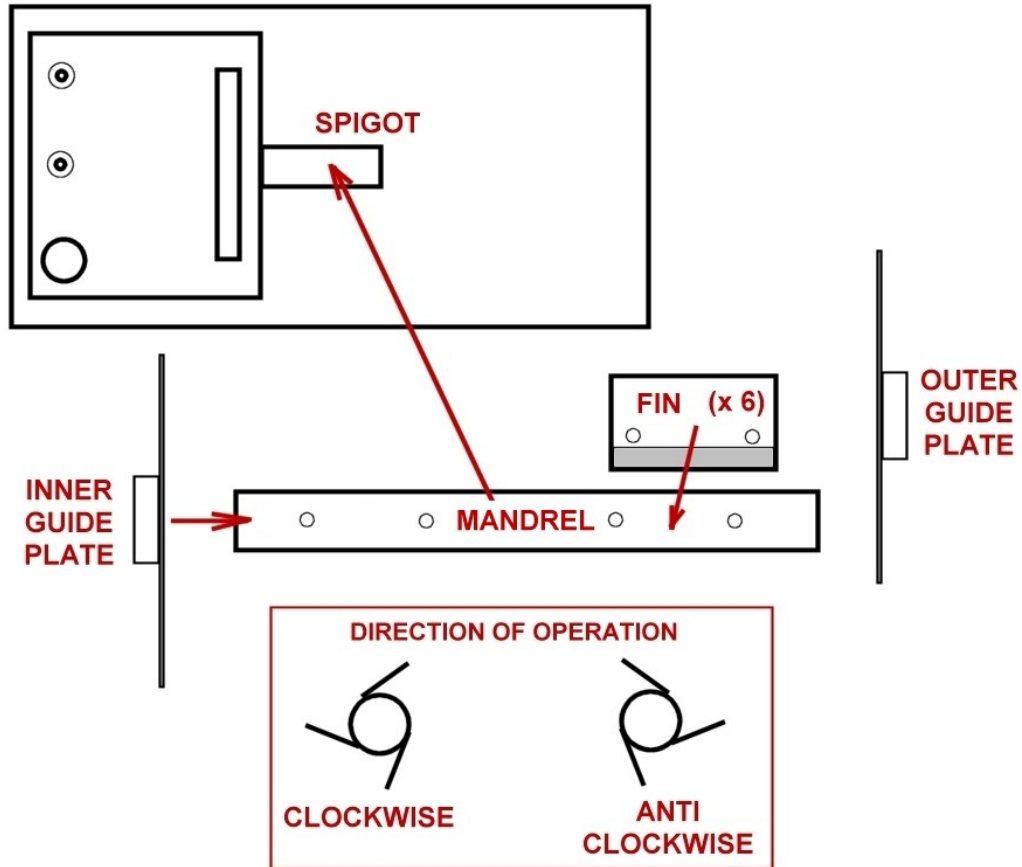


Inside Wound – label is wound onto take-up reel inside the backing.

Outside Wound – label is wound onto take-up reel outside the backing.

- c) Slide the outer guide plate onto the mandrel (flush against the side of the label) and lock in place using the Allen key supplied with the unit.
- d) Select the desired direction of operation.
- e) Select the torque method.
- f) Set the direction switch to the desired direction of rotation – the mandrel should rotate and take up any slack from the label reel.
- g) Start the printer – as the printer begins to feed labels, the mandrel should begin to rotate – adjust the torque (speed) setting to the lowest speed that keeps the feed from the printer tight without developing any slack.
- h) To remove the reel, set the direction switch to **0** to stop the motor. Remove the outer guide plate and slide off the cardboard core containing the wound reel. Mount a new empty core to begin again.

ASSEMBLY



1. Slide the inner guide onto the end of the mandrel (end with bore hole) and lock in place using the Allen key provided with the unit on the recessed screw. The outer guide plate is optional and may be fitted/removed as required when the unit is in operation.
2. Slide the mandrel onto the spigot, ensuring that hole for the fixing screw is over the flat side of the spigot.
3. Use the Allen key to tighten the fixing screw so that the mandrel is secure and will not move on the spigot.
4. Attach the fins to the mandrel, ensuring that they are mounted appropriate to the intended direction of operation (if the fins are mounted inversely, the take-up core may slip over the mandrel when the unit is in use).
NB: For **bi-directional operation**, mount the inner fins (nearest the main body) according to the primary direction of operation, and the outer fins according to the reverse direction of operation.
5. Plug the jack from the power supply unit into the socket on the back of the unit.
6. Plug the power supply unit into an electricity supply.
7. The unit is ready for use.